

ICBA Platinum Edition, CE 220-240V

Height: 26.8" (68.1cm) Width: 10.2" (25.9cm) Depth: 22.1" (56.1cm)



- Produce fresh cold brew in minutes with the new Cold Brew mode, enabling operators to brew an on-demand batch of concentrate or ready-to-drink cold brew quickly and consistently with operational ease
- Add Bubble Tea to the menu with the new Bubble Tea Kit (54165.1018)
- 4.3" Color Touchscreen aides in customizing recipes, brewing options and control
- The Infusion Series® Platinum Edition relies on the powerful duo of the Peak Extraction Sprayhead and SmartWAVE® technology to further enhance the uniformity of extraction and resistance to limescale buildup.
- USB programming for uploading and downloading recipes and software updates, all in less than a minute
- Brews into 2.5 to 3.8L (84 to 128 oz) airtots and 3.8 to 5.7L (1 to 1.5 gallon) baseless Thermofresh servers
- BUNN Infusion Series technology allows for multiple recipes from one footprint
- Energy-saver mode reduces tank temperature during idle periods
- Electronic funnel lock prevents removal of the brew funnel until drip- through is complete
- Brew counter keeps track of how many batches are brewed
- Pre-infusion and pulse brew for maximum flavor extraction. Cold brew lockout & digital temperature control further ensure top-notch brewing
- Hot water faucet (supplied for custom installation)

Server(s) sold separately



Agency:
CAFFEINE LIMITED
Quality, Pride & Passion

CAFFEINE LIMITED
3 LITTLE MUNDELLS, WELWYN GARDEN CITY
HERTFORDSHIRE, UNITED KINGDOM, AL7 1EW
T. 01707 278 400 caffeineonline.co.uk



Specifications

Product #: 53300.0500

Faucet: Variable

Water Access: Plumbed

Sprayhead: Silicone-17Holes

Finish: Stainless

Funnel: Stainless Steel

Additional Features

Funnel Locks

Electrical & Capacity

Volts*	Amps	Watts	Cord Attached	Plug Type	8oz cups/hr 236ml cups/hr	Input H ₂ O Temp.	Phase	# Wires plus Ground	Hertz
220-240	11.0-12.0	2400-2900	Yes	EURO 16A	141	60°F (15.5°C)	1	2	50-60

*When a BUNN is machine rated 120/208-240V, 120/208V or 120/240V, the higher voltage is the supply voltage needed to power the machine. The 120V is there to supply power to some components rated 120V in the machine, but it is not the supply voltage and would not power the machine if the machine is marked with the before mentioned ratings.

Plumbing Requirements

PSI	kPa	Fitting Supplied	Water Flow Required (GPM)
20-90	138-621	3/8" Male Flare Fitting	1.00

CAD Drawings

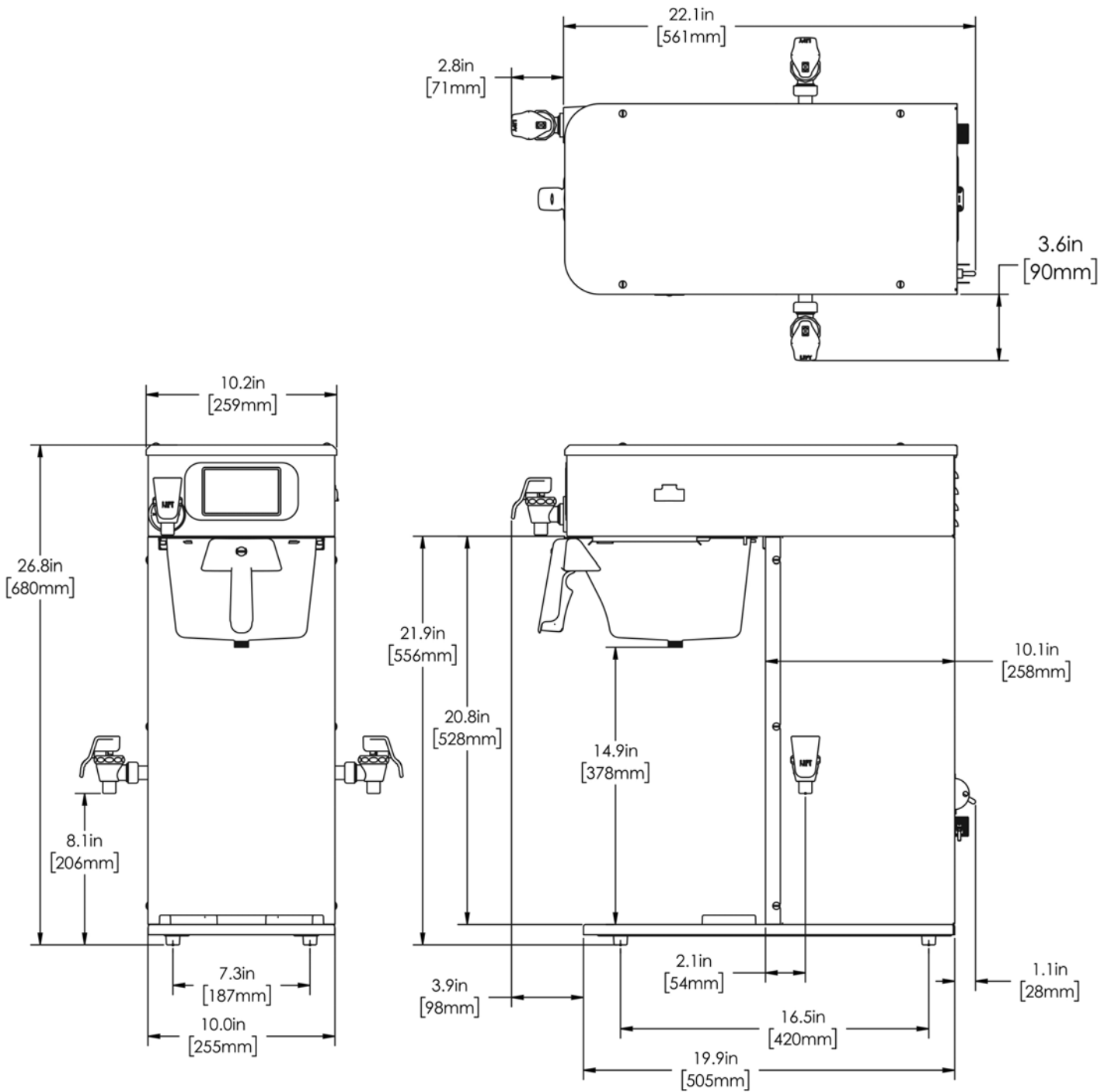
2D	Revit	KLC

WARNING:



BUNN® reserves the right to change specifications and product design without notice. Such revisions do not entitle the buyer to corresponding changes, improvements, additions or replacements for previously purchased equipment. For most current specifications and other info visit bunn.com.

Last Updated:
04/07/2023



	Unit			Shipping				
	Height	Width	Depth	Height	Width	Depth	Weight	Volume
English	26.8 in.	10.2 in.	22.1 in.	34.9 in.	13.3 in.	27.4 in.	53.710 lbs	7.321 ft ³
Metric	68.1 cm	25.9 cm	56.1 cm	88.6 cm	33.7 cm	69.5 cm	24.363 kgs	0.207 m ³



BUNN® reserves the right to change specifications and product design without notice. Such revisions do not entitle the buyer to corresponding changes, improvements, additions or replacements for previously purchased equipment. For most current specifications and other info visit bunn.com.

Last Updated:
04/07/2023

Related Products & Accessories: ICBA Platinum Edition, CE 220-240V(53300.0500)



FILTERS, GOURMET 500
500/1 50/CL

Product #: 20138.1000



WATER FILTER,
EQHP-10L

Product #: 39000.0001



WATER FILTER,
EQHP-10

Product #: 39000.0004

FUNNEL ASSY, SST
INFUSION COFFEE

Product #: 54675.0001

FUNNEL ASSY, SST
INFUSION COFFEE

Product #: 54675.0008



SYSTEM, WQ-55(2)5L

Product #: 56000.0001



SYSTEM, WQ-55(2)5

Product #: 56000.0004



SYSTEM, WEQ-10(1.5)5L

Product #: 56000.0024



SYSTEM, WEQ-10(1.5)5

Product #: 56000.0027



CARTRIDGE, WQ-55(2)5L

Product #: 56000.0101



CARTRIDGE, WQ-55(2)5

Product #: 56000.0104



CARTRIDGE, WEQ-10
(1.5)5L

Product #: 56000.0121



CARTRIDGE, WEQ-10
(1.5)5

Product #: 56000.0122



BUNN® reserves the right to change specifications and product design without notice. Such revisions do not entitle the buyer to corresponding changes, improvements, additions or replacements for previously purchased equipment. For most current specifications and other info visit bunn.com.

Last Updated:
04/07/2023

Serving & Holding Options: ICBA Platinum Edition, CE 220-240V(53300.0500)



AIRPOT, 2.5L GL PB 6/
CASE

Product #:13041.0101



AIRPOT, 2.5L SST LA
SINGLE PK

Product #:32125.0000



AIRPOT, 2.5L SST LA 6/
CASE

Product #:32125.0100



AIRPOT, 3.0L SST LA
SINGLE PK

Product #:32130.0000



AIRPOT, 3.0L SST LA 6/
CASE

Product #:32130.0100



AIRPOT, 3.8L SST LA
SINGLE PK

Product #:36725.0000



AIRPOT, 3.8L SST LA 6/
CASE

Product #:36725.0100



STAND ASSY, TF
SERVER

Product #:39795.0003



TF SERVER, DSG2 1G
SST NOBASE

Product #:42700.0050



TF SERVER, DSG2 1G
BLK NOBASE

Product #:42700.0051



TF SERVER, 1G DSG
GEN3 NOBASE

Product #:42700.0250



TF SERVER, DSG2 1.5G
SST NOBAS

Product #:42750.0050



TF SERVER, 1G/3.8L
MECH NOBASE

Product #:44000.0050



TF SERVER, 1G/3.8L
MECH BLK NOBASE

Product #:44000.0051



TF SERVER, 1G MECH
GEN3 NOBASE

Product #:44000.0250

STAND ASSY, TF
SERVER

Product #:54473.0000



STAND ASSY KIT, TF
SERVER

Product #:54473.1000



BUNN® reserves the right to change specifications and product design without notice. Such revisions do not entitle the buyer to corresponding changes, improvements, additions or replacements for previously purchased equipment. For most current specifications and other info visit bunn.com.

Last Updated:
04/07/2023